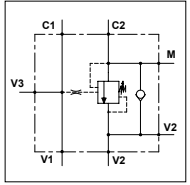


WOS 30 - 1F PP

TECHNICAL DATA

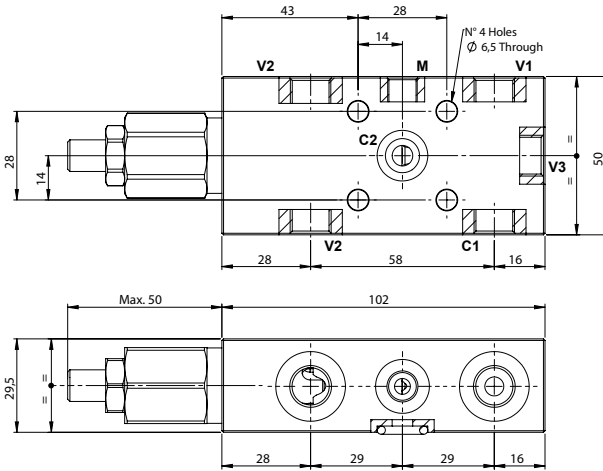
- Flow:** 30 l/min
- Max setting pressure:** 350 bar
- Materials:** Steel Body
- Pilot ratio:** 4:1 (if request 8:1; 11:1)
- Weight:** 1,250 kg

- Note:** Pressure setting must be 30 % higher that pressure induced by the load

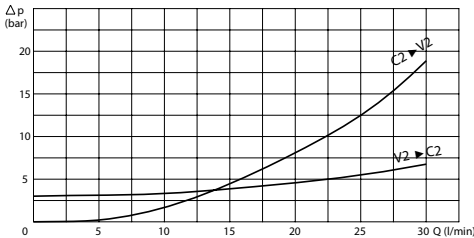


PORTS	
C1 - V3 V1 - V2	1/4
C2	ø6
M	1/4

Possibility 3/8 ports.
Please contact our sales department.



PRESSURE DROP CURVES



SPRINGS

Code	20			35		
	Pilot ratio	Adjustable pressure range bar	Pressure increase bar/turn	Standard setting bar	Adjustable pressure range bar	Pressure increase bar/turn
4:1	60-210	70	170	80-350	120	280
8:1	60-220	50		100-350	85	
11:1	60-250	90		80-350	150	

ORDERING CODE

WOS

30

1F

PP

Ports Size:
- 1/4
- 3/8

Springs:
- 20
- 35

Pilot Ratio:
- Omit if 4:1
- 8 = 8:1
- 11 = 11:1

Adjustment if Required:
- Omit if not required
- Value